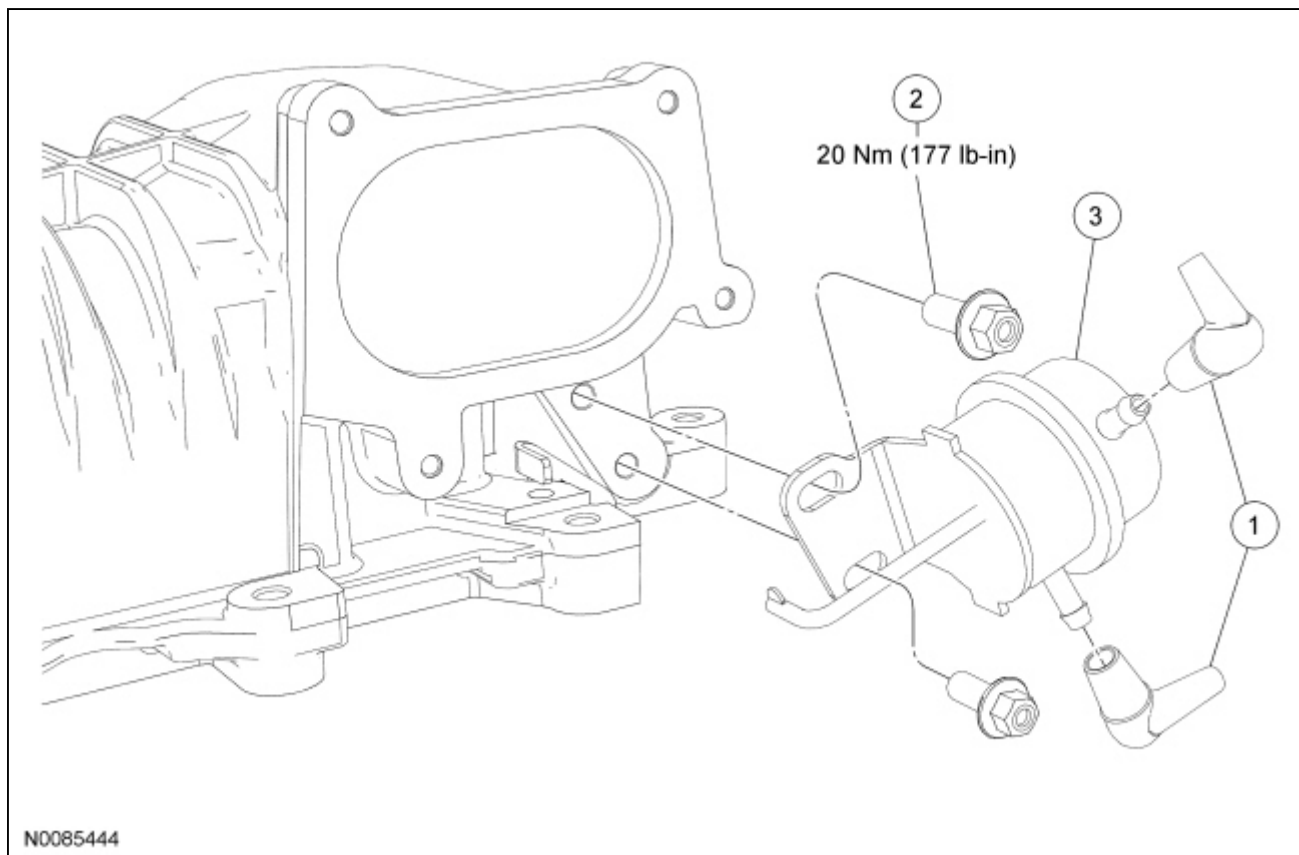


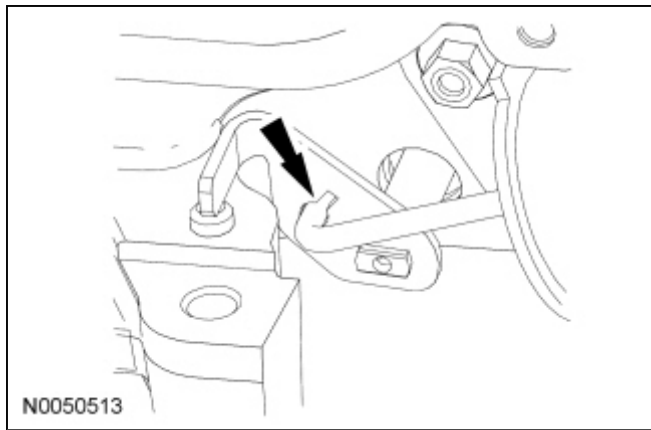
Supercharger Bypass Vacuum Actuator



Item	Part Number	Description
1	9E499	Supercharger (SC) bypass vacuum actuator vacuum connectors
2	—	SC bypass vacuum actuator bolt (2 required)
3	6F066	SC bypass vacuum actuator

Removal

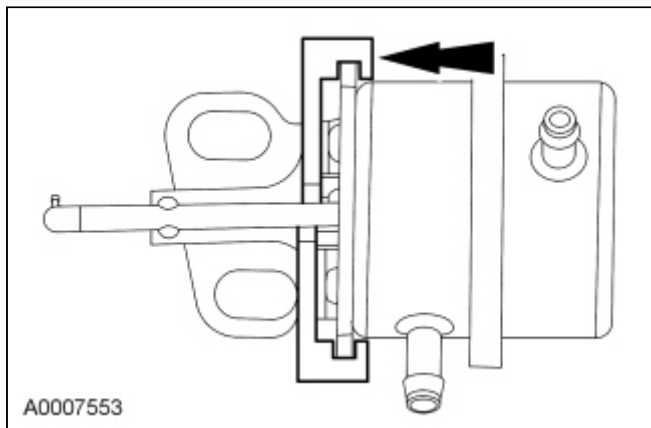
1. Remove the Throttle Body (TB). For additional information, refer to [Section 303-04C](#).
2. Disconnect the 2 Supercharger (SC) bypass vacuum actuator vacuum connectors.
3. Remove the 2 [SC](#) bypass vacuum actuator bolts.
4. Rotate the [SC](#) bypass vacuum actuator to align the actuator rod with the slot in the linkage, and remove the actuator.



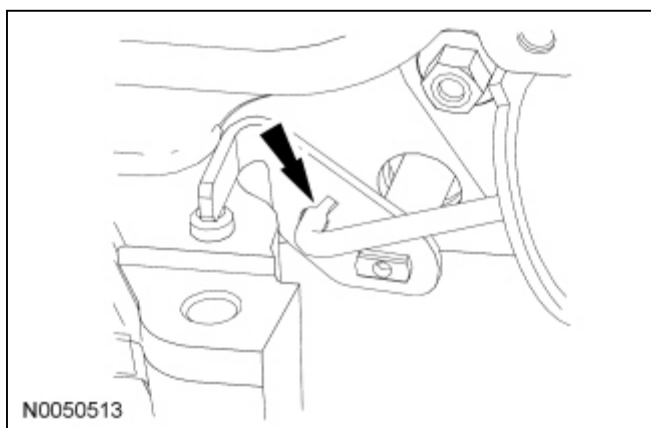
Installation

1. **NOTICE:** The actuator adjustment tool included with the new actuator kit must be used when installing the Supercharger (SC) bypass vacuum actuator. Failure to correctly adjust the actuator will result in incorrect operation of the SC assembly.

Install the adjustment tool on the motor, making sure the tool is correctly attached to the actuator rod.



2. Align the actuator rod with the slot in the linkage, and rotate the SC bypass vacuum actuator into position.



3. Install the 2 SC bypass vacuum actuator bolts.
 - Tighten to 20 Nm (177 lb-in).
4. Connect the 2 SC bypass vacuum actuator vacuum connectors.
5. Remove the adjustment tool.
6. Install the TB. For additional information, refer to [Section 303-04C](#).
